



Check Valve:

This series of product is a kind of one-way control valve. The medium through this valve can only flow in one-way. It is in reasonable design and simple structure, with handsome shape and wide application.

● **Ordering Code**



CV

(Pipe Size):
 06: G1/8
 08: G1/4
 10: G3/8
 15: G1/2
 20: G3/4
 25: G1

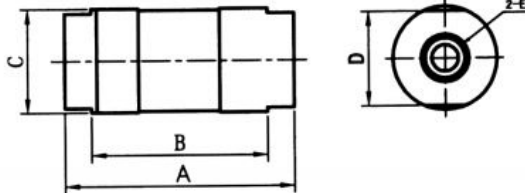
■ **Graphics Sign**



■ **Technical Parameter**

Specification	Item (Pipe Thread)	mm (Nominal Diameter)	(Applicable Fluid)	(Pressure Range)	(Min. Operating Pressure)	(Applicable Temperature)
CV-06	G1/8	6	(Compressed Air)	0.05~1.2 MPa	0.05MPa	-5~60°C
CV-08	G1/4	8				
CV-10	G3/8	10				
CV-15	G1/2	15				
CV-20	G3/4	20				
CV-25	G1	25				

■ **Figure Dimension**



Specification	A	B	C	D	E
CV-06	64	53	φ 28	24	G1/8
CV-08	64	53	φ 28	24	G1/4
CV-10	86	66	φ 39.5	36	G3/8
CV-15	86	66	φ 39.5	36	G1/2
CV-20	112	90	φ 53.5	46	G3/4
CV-25	112	90	φ 53.5	46	G1